

E & T Ceramics Greenware Catalog

© 2011 E & T Industries, Inc.

Section 8

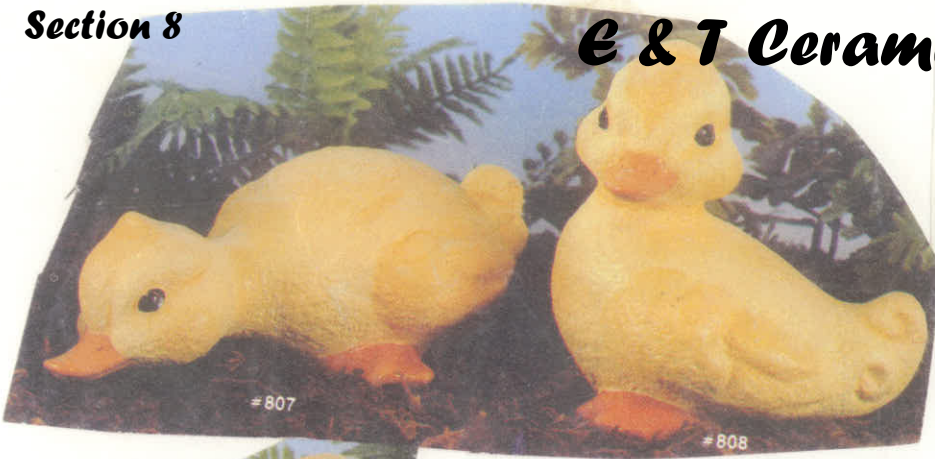
***367 Billings Road ~ Quincy MA 02170
617-479-4107 ~ etimcoe@yahoo.com***

Bisque Orders on Request



2662 Sitting







Lg + SM Bears



634



Mackey's



1188 Dog



#769 Cats Around Candle Jar Pot



Herton



2366



Black Bird





SM-1049A Birds of America



K-49 ELEPHANTS
1", 1 1/2"



E-Z#31 - Frog Family 1 1/2" Tall



AW 245



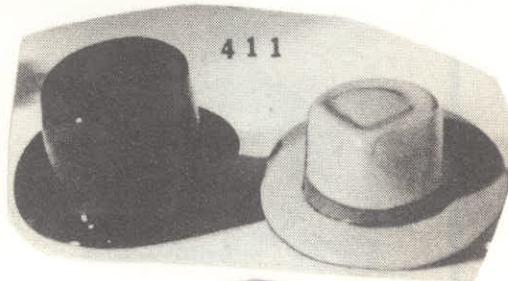
#527

CATALOG \$4.00 ppd.



2669
\$35
5.25"T
5"W

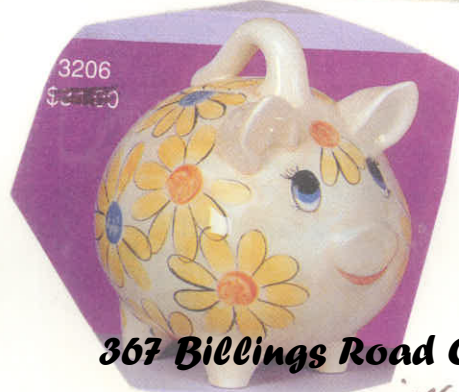
2670
\$35
5"T
6.25"W



411



G-748



3206
\$4.95



(15)



M321



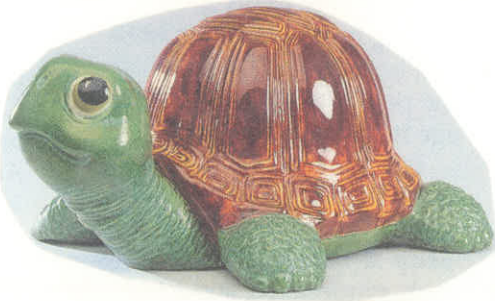
K-29 SEA HORSES
1 3/4" x 3"



C144 Horse Pencil Holder



BM-895 - Sad Dog
11" x 6 1/4"



#3317
STALLION
8-1/2"
e.



2761 Row of frogs 9-1/4"



23 35

#2696
FISH
CHIMINEA
7-1/4"
\$35.95
\$26.75



#2153 ~ BLUEGILL / SUNFISH ~
6" e

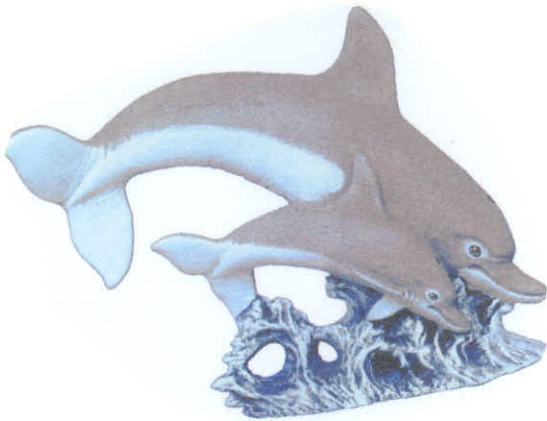


341 • • •
8 1/2" tall Skunk Family

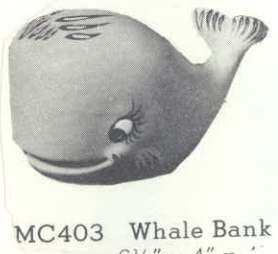
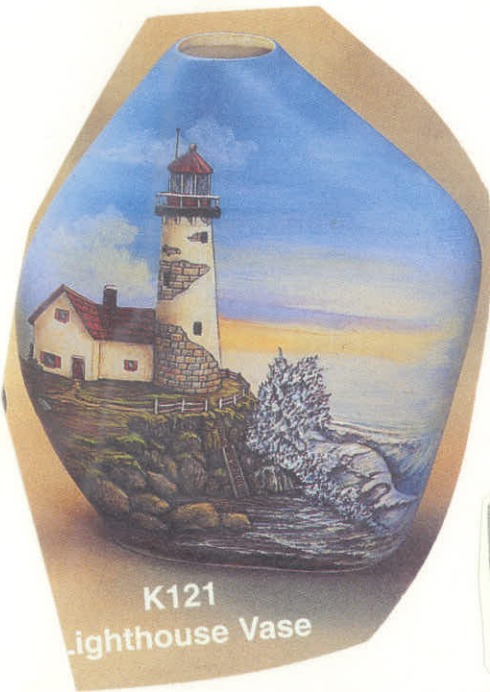


Q-17230





CAT Round





2921



3019



E & T Ceramics



2743
Triple Wood Post
14.25"T x 9"W

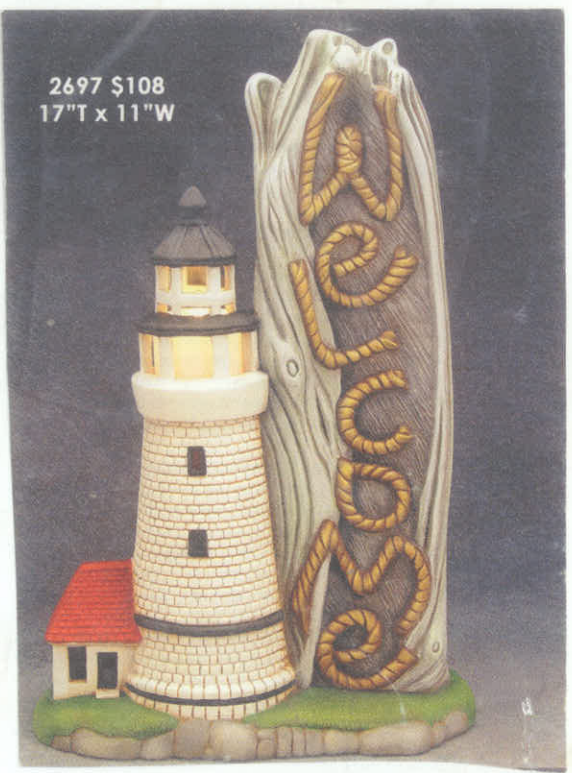
26.5"T
Total Height
w/ Lantern

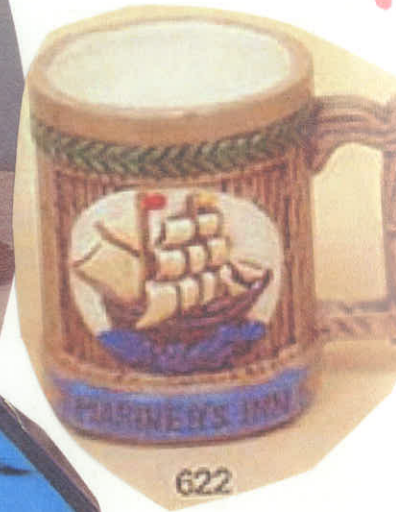
2751
"Peter"
6.25"T
7"W

2752
"Paul"
Pelican
6.75"T
5.75"W

Sign
6.5"W
3.5"T
Nail
2"W

2753
"Patsy"
Pelican
7"T
6.5"W





E & T Ceramics



Scallop round



Bird House Round

